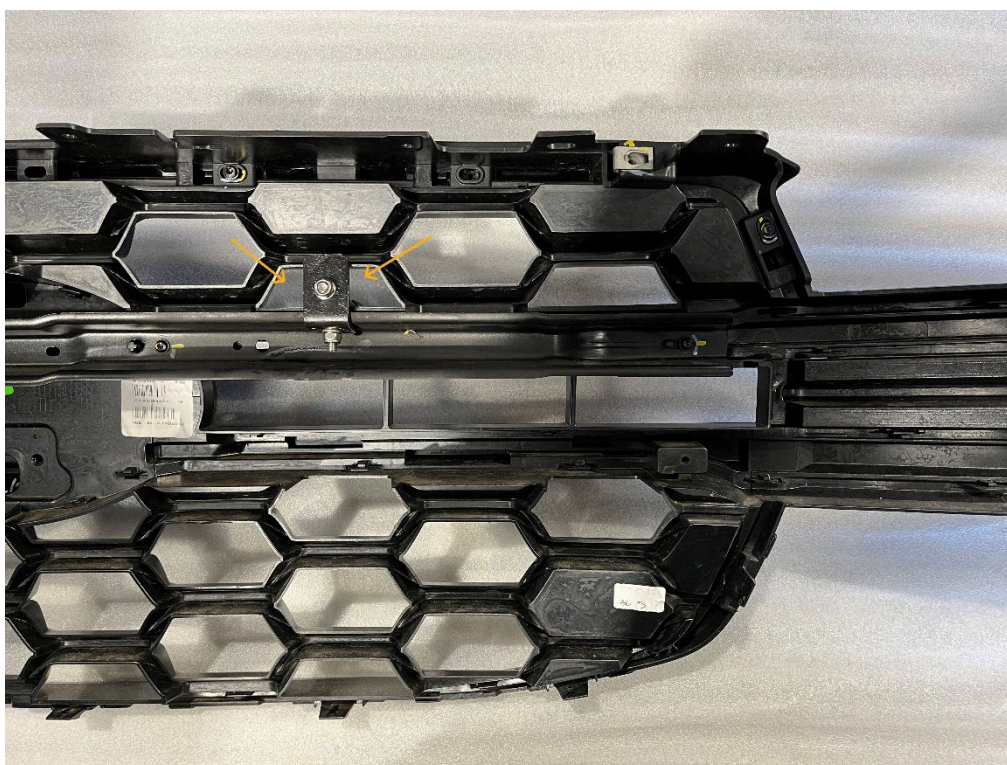


WR46-FITTINGKIT Guide

- Remove grille and number plate but do not remove plastic number plate mounting.
- Align spot light mounting bracket and mark locations for holes to be drilled marked by blue arrows below. Drill 8.5mm holes through bumper whilst being cautious to not drill into radiator. Number plate fixings can be used additionally using the top two holes in the bracket. – Caution – do NOT cover crash collision radar.



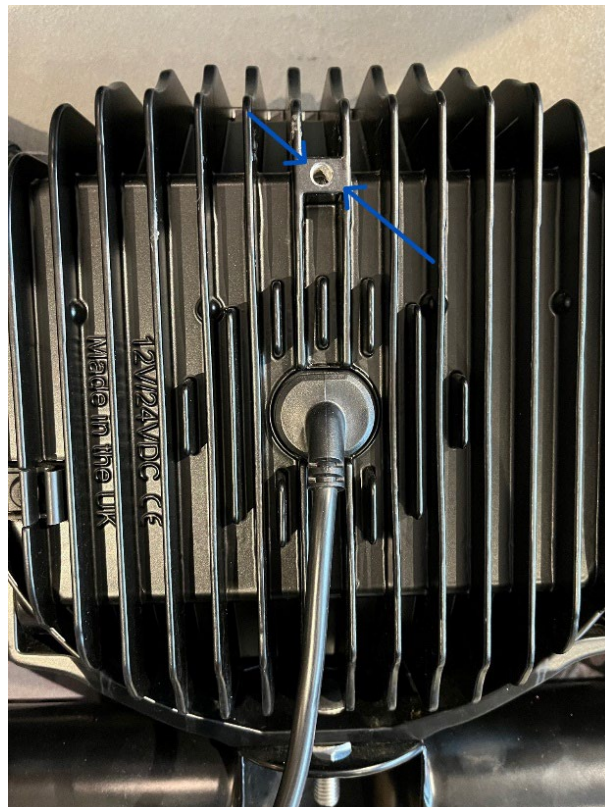
- Drill & fix stay bar bracket in the centre of the vent opening shown below, repeat for the opposite side. *Note – metal support bar can be removed for ease of drilling.*



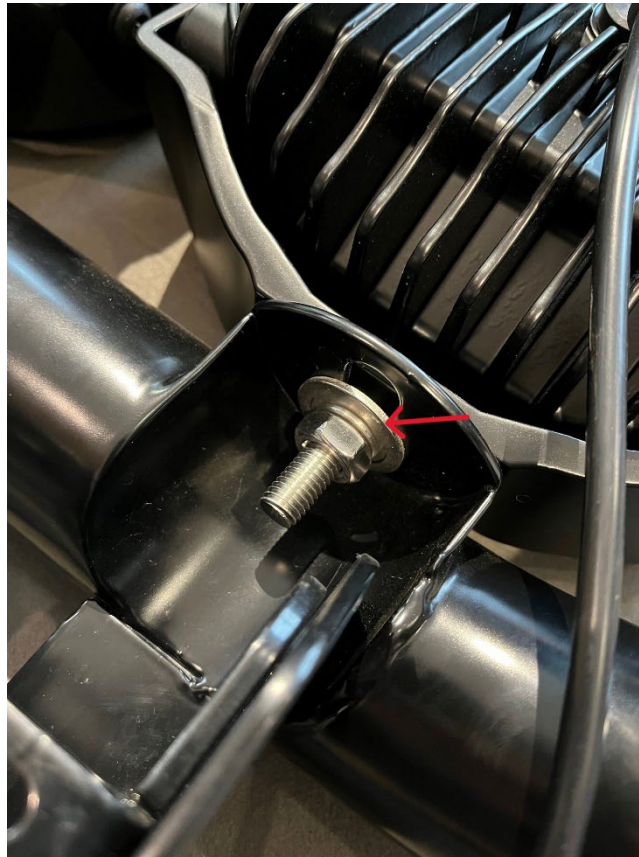
- Once brackets fixed in position, fix stay bars to brackets. Re fit grille at the bottom half only so that top of grille can be pulled forward for routing wiring.



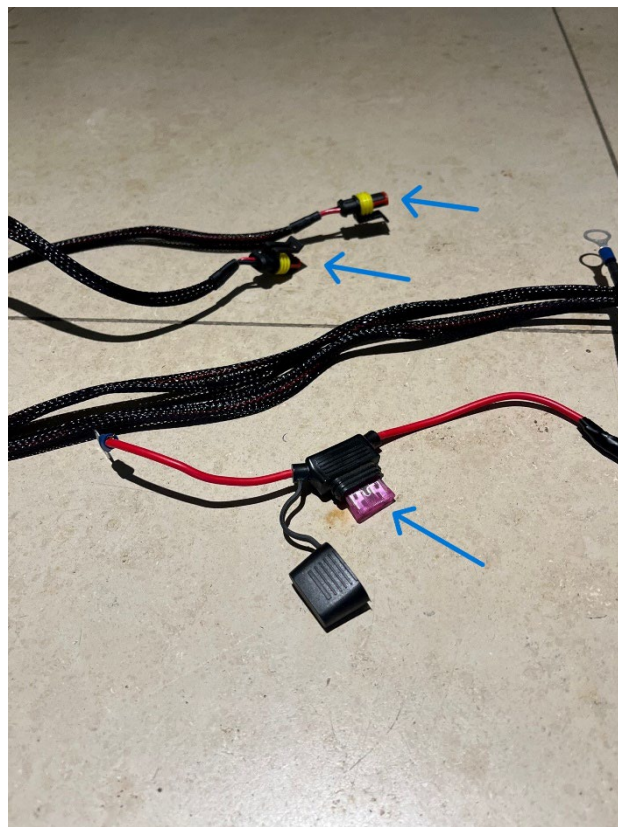
- Before installing lights, two lights require holes to be tapped M6 in the hole location shown below. These tapped holes are for the stay bars.



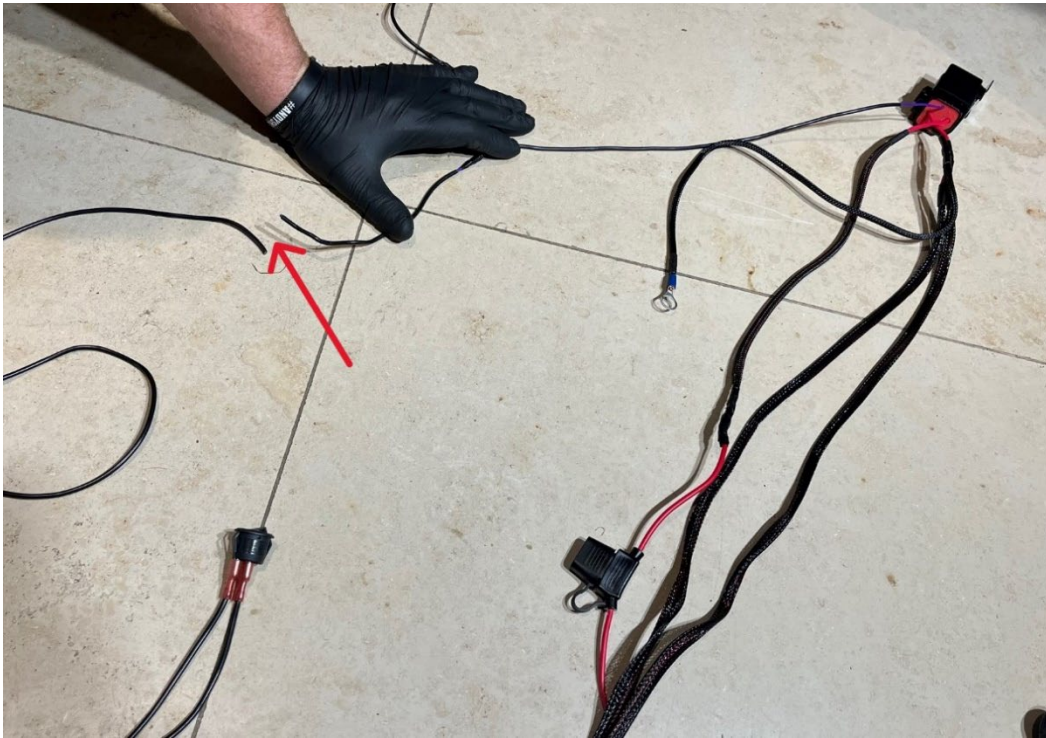
- Instal the lights onto the mounting bracket using the fittings provided with the lights.
- Note – the penny washer arrowed red below is provided in the WR46-FITTINGKIT



- The fuse for the twin loom needs to be replaced with a 40A fuse. (Provided)



- Remove the switch from both looms by cutting both switch wires. (Leave a safe length on one) Both switch wires on the loom need to be connected together so that they become one signal wire.



- Signal wire needs to be routed into the cab of the vehicle and connected to 'Pos Light' wire connection. Red wire shown below shows a location for routing through bulkhead, this is near side.



- Location of 'Pos Light' – foot well on near side.



- 'Pos light' is labelled, grey in colour with a brown chase.

