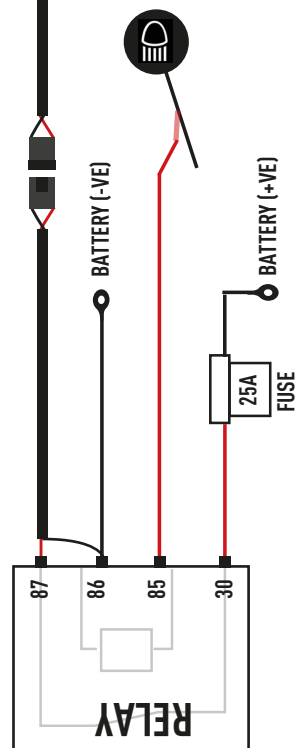


LINEAR-18



EN - ALSO AVAILABLE WITH SWITCH
 DE - AUCH VERFÜGBAR MIT SCHALTER
 FR - AUSSI DISPONIBLE AVEC INTERRUPTEUR
 ES - TAMBIÉN DISPONIBLE CON INTERRUPTOR



CAN'T FIND A HIGH BEAM 12V SIGNAL?

For vehicles that do not produce a constant 12v signal from the back of the headlight will require a CanM8 High Beam interface to control the signals. Please see our youtube channel, or scan the QR code for more information regarding install of the CanM8 interface.



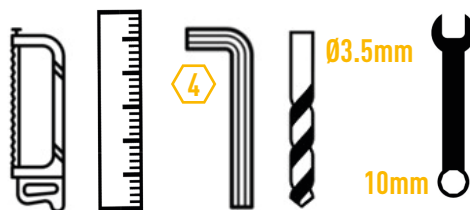
WHAT'S REQUIRED | INHALT | LES TENEURS | CONTENIDO

- 1x Linear-18 (side brackets included)
- 1x Wiring kit
- 1x Fixing kit

Additionally - you may require:

- 1x CanM8 High beam interface

TOOLS REQUIRED | BENÖTIGTE WERKZEUGE | OUTILS NÉCESSAIRES | HERRAMIENTAS NECESARIAS



Thank you for choosing a Lazer Lamps product.

Vielen Dank dafür, dass Sie sich für ein Produkt von Lazer Lamps entschieden haben.

Merci pour choisir un produit de Lazer Lamps.

Gracias por la selección de productos de Lazer Lamps.

LAZER
HIGH PERFORMANCE LIGHTING

T: +44 (0)1992 677374

E: SALES@LAZERLAMPS.COM

W: WWW.LAZERLAMPS.COM

Lazer Lamps Ltd, Units 1&2 Harlow Mill Business Centre, Riverway, Harlow, Essex. CM20 2FD. United Kingdom



LAZER
HIGH PERFORMANCE LIGHTING



NISSAN NAVARA (2014+)

FITTING INSTRUCTIONS
ANLEITUNG
INSTRUCTIONS
INSTRUCCIONES

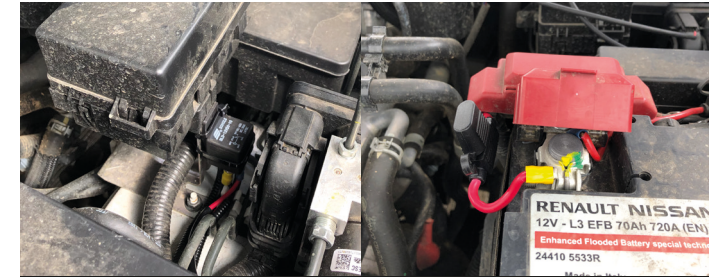
INSTALLATION | INSTALLER | INSTALLIEREN | INSTALAR



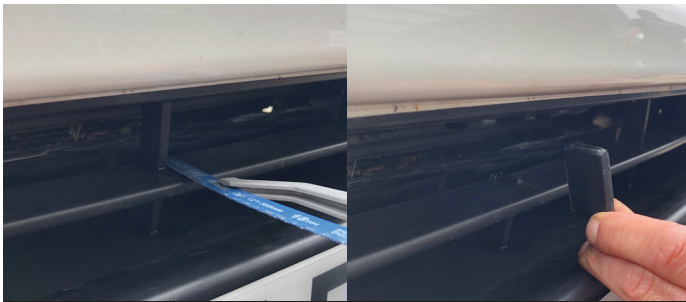
1. Remove trim clips that are located under the bonnet for the front grille.



2. Unclip grille sides using a plastic trim removal tool. If vehicle has a front camera, this will need to be unplugged to remove grille.



3. Install Relay close to the battery and connect the live and earth feed to battery. Connect signal wire according to preferred method (splice or switch).



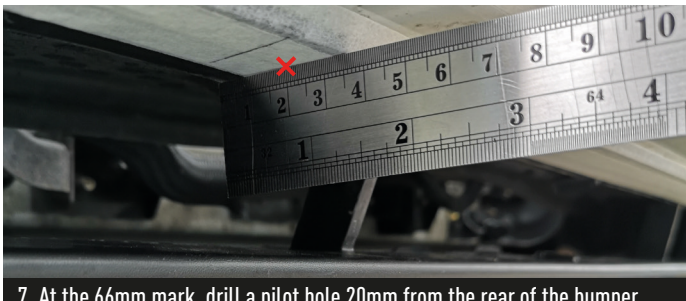
4. Using cutters or a blade, remove the upper centre grille vian as shown.



5. Locate the outer upper viens on the lower grille.



6. Mark 66mm outwards from each vian for pilot hole location.



7. At the 66mm mark, drill a pilot hole 20mm from the rear of the bumper towards the front.



8. Locate the pilot holes from above the grille and drill to 8mm diameter.



9. Install side bracket's to vehicle as shown (bracket base pointing inwards, straight edge forward).



10. Bolt the Linear-18 to the mounting brackets.



11. Feed lamp cable through to engine bay and plug into wiring harness.



12. Ensure light bar is working before re-assembling vehicle.