



**PREMIUM WIRING LOOM FITTING
INSTRUCTIONS**

**KIT # 10055796 Navara
& 10055794 Navara Euro**

INSTRUCTION # 10056026

**NISSAN NAVARA 14+
&
NISSAN NAVARA EURO 14+**

PREMIUM LOOM FITTING INSTRUCTIONS

Instruction # 10056026

READ INSTRUCTIONS CAREFULLY BEFORE COMMENCING THIS ACTIVITY.

General Notes

- **If a bedliner is fitted, remove this before comencing fitment.**
- **If a SPORTGUARD is fitted, remove the front wall before comencing fitment.**
- Read through the fitting instructions before installation of accessory.
- Always install the accessory following the fitting instructions. Failure to do so may cause damage to the vehicle or the accessory and void the warranty.
- Ensure all recyclable discarded vehicle/accessory components and packaging are recycled following local recycling regulations.
- It is always recommended that this accessory is fitted by a qualified Technician.
- Safely store and protect any removed vehicle components.
- Ensure all bare metal surfaces are protected using Automotive Bare Metal Primer and touch-up paint.
- Remove all metal swarf and dust from all vehicle surfaces if surface is used for accessory installation.
- Ensure all fasteners are torqued to the specifications as per instruction.
- Apply any adhesives to the vehicle only when the surface temperature is between 20°C to 40°C.
- Recommended all smooth lids are painted. Failure to paint lid will void the warranty.

General Vehicle and Accessory Warranty Notes and Cautions

- For correct installation and proper operation of the vehicle and accessory we recommend this accessory is fitted by a qualified Technician.
- During the accessory fitment ensure all automotive safety practices and regulations are followed.
- Do not modify the vehicle in any way other than specified in these Accessory Fitting Instructions as this may void the warranty.

Safety Notes

- Check that all work practises comply with safety standards.
- It is advisable to seek assistance from another person when lifting heavy components.
- While using power tools ensure safe procedures are followed.
- Appropriate clothing & PPE must be worn.



PREMIUM LOOM FITTING INSTRUCTIONS

Instruction # 10056026

Fit Time: 60mins









READ INSTRUCTIONS CAREFULLY BEFORE COMMENCING THIS ACTIVITY.

Fitment Time



Accessory fitting times are provided as a guide only. Accessory fitting times are for the installation of the product only and do not include administration or vehicle processing time.

Tools Required

No.	Description	Image	No.	Description	Image
1	Cleaning Rags		2	Power Drill	
3	Metric Ruler		4	Rivet Gun	
5	Drill Bit 5mm		6	Flat Head Screw Driver	
7	Craft Knife		8	25mm Hole Saw	
9			10		
11			12		

PREMIUM LOOM FITTING INSTRUCTIONS

Instruction # 10056026

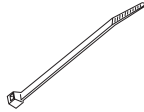

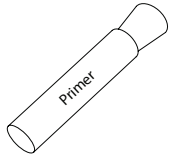
READ INSTRUCTIONS CAREFULLY BEFORE COMMENCING THIS ACTIVITY.

Kit Contents- Hardware				
No.	Item Description	Quantity	Image	Service Part Number
1	Central Locking Vehicle Loom	1		10055660
2	Braided Sleeve	1		10055265
3	Reusable Cable Tie	1		10055284
4	Rivet	1		10000089
5	M5 Washer	1		10052603
6	Rivet Cable Tie Mount	1		10055285
7	Adhesive Cable Tie Mount	2		10052380

PREMIUM LOOM FITTING INSTRUCTIONS

Instruction # 10056026

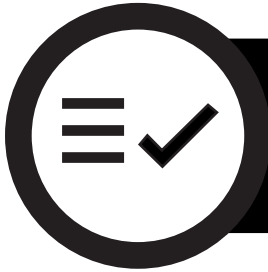
READ INSTRUCTIONS CAREFULLY BEFORE COMMENCING THIS ACTIVITY.

Kit Contents- Hardware				
No.	Item Description	Quantity	Image	Service Part Number
8	Cable Tie 165mm	2		10053437
9	Alcohol Cleaning Wipe	1		10051664
10	Primer Stick	1		10051996

PREMIUM LOOM FITTING INSTRUCTIONS

Instruction # 10056026

READ INSTRUCTIONS CAREFULLY BEFORE COMMENCING THIS ACTIVITY.



Check that the contents of the Fitting Kit are complete and undamaged.



If any contents of the Fitting Kit are found incomplete or damaged they must be replaced using the specified accessory components.

PREMIUM LOOM FITTING INSTRUCTIONS

Instruction # 10056026

READ INSTRUCTIONS CAREFULLY BEFORE COMMENCING THIS ACTIVITY.

Step 1

- Open front RH door and remove the lower plastic scuff plate by prising the inner edge upwards.



Step 2

- Remove the front RH kick panel by prising outwards.



Step 3

- Open rear RH door and remove the lower plastic scuff plate by prising the inner edge upwards.



PREMIUM LOOM FITTING INSTRUCTIONS

Instruction # 10056026

READ INSTRUCTIONS CAREFULLY BEFORE COMMENCING THIS ACTIVITY.

Step 4

- Peel up the rubber pinch seal on either edge of the B-pillar (between the front and rear doors).



Step 5

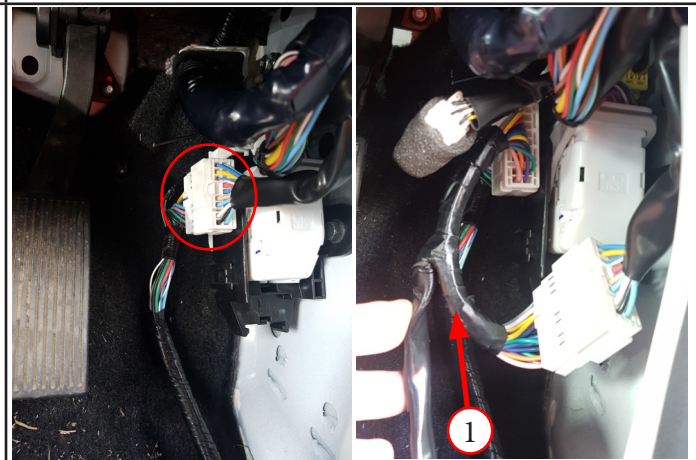
- Loosen the B-pillar plastic panel by prising each edge outward.

Note: The panel does not need to be removed completely.



Step 6

- Disconnect the vehicle central locking connectors and patch in the corresponding plugs of the central locking vehicle loom (item 1).



PREMIUM LOOM FITTING INSTRUCTIONS

Instruction # 10056026

READ INSTRUCTIONS CAREFULLY BEFORE COMMENCING THIS ACTIVITY.

Step 7

- Feed the SPORTLID V connector under the B pillar panel, loosened in step 5. Pull all excess loom through into the rear footwell.



Step 8

- Tilt the rear seat up and locate the mounting bolts (one on each end of seat).
- Locate the center seatbelt mount that runs through the seat.



Step 9

- Unbolt the three mount bolts located in step 8 and remove seat entirely.

Note: Take care to keep all seatbelt components clear of seat during removal.



PREMIUM LOOM FITTING INSTRUCTIONS

Instruction # 10056026

READ INSTRUCTIONS CAREFULLY BEFORE COMMENCING THIS ACTIVITY.

Step 10

- Locate and remove the three plastic fasteners on the rear wall carpet (near the centre seatbelt).
- Peel the carpet forward exposing the rear cab wall.



Step 11

- At the base of the rear RH C-pillar plastic, feed the SPORTLID V plug underneath the carpet until it can be relocated at the back wall.



Step 12

- Remove plastic cap from the bottom RH corner of the vehicle deck front wall.
- Cut a vertical slit in the plastic cap.



PREMIUM LOOM FITTING INSTRUCTIONS

Instruction # 10056026

READ INSTRUCTIONS CAREFULLY BEFORE COMMENCING THIS ACTIVITY.

Step 13

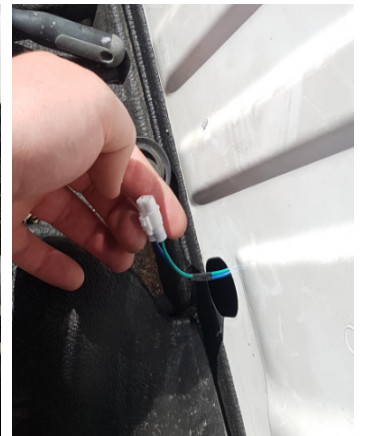
!! For ST-X Vehicles Only !!

- On the back wall of the cab, drill a 25mm hole underneath the water drain tube for the power sliding window. (non-ST-X models already have a spare hole).



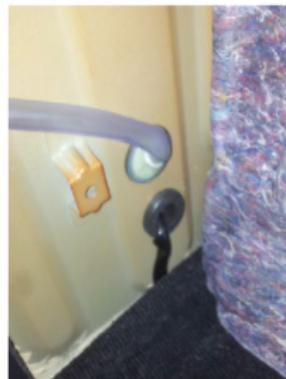
Step 14

- Feed the SPORTLID V plug out through the hole in the cab and in through the hole in the tub (exposed in step 12).



Step 15

- Pull the loom through until the grommet pops into place inside the cab.



ST-X vehicle



NON ST-X vehicle

PREMIUM LOOM FITTING INSTRUCTIONS

Instruction # 10056026

READ INSTRUCTIONS CAREFULLY BEFORE COMMENCING THIS ACTIVITY.

Step 16

- Slide the plastic cap from step 12 over the entire length of excess loom and put back into place.



For vehicles with a bedliner or SPORTGUARD

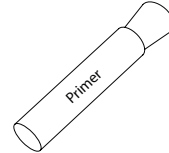
-Comense step 17

For vehicles without a bedliner or SPORTGUARD

-Skip to step 21

Step 17

- Clean the area of front wall shown with alcohol wipe (item 9) and prime with primer stick (item 10).



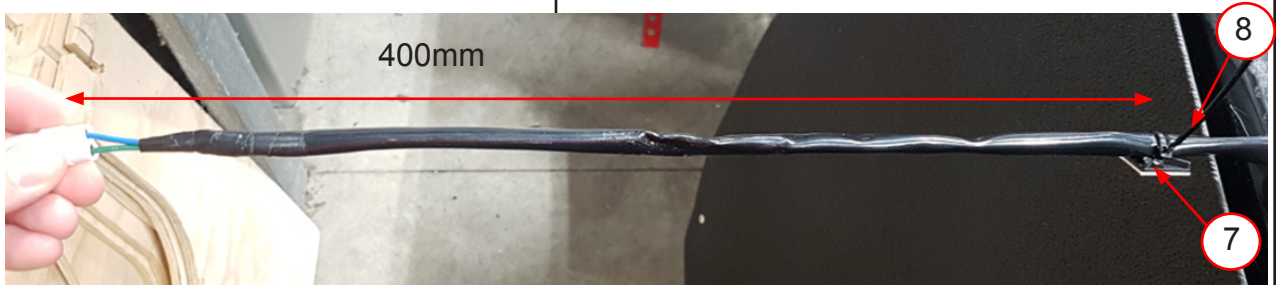
PREMIUM LOOM FITTING INSTRUCTIONS

Instruction # 10056026

READ INSTRUCTIONS CAREFULLY BEFORE COMMENCING THIS ACTIVITY.

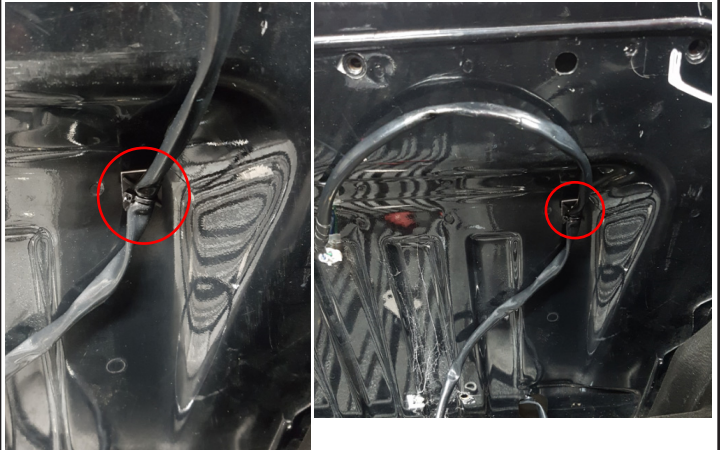
Step 18

- Fasten cable tie (item 8) and adhesive cable tie mount (item 7) to the loom, 400mm from the end plug.



Step 19

- Stick mount in the centre of the primed position from step 17.



Step 20

- Re-fit bed liner or SPORTGUARD, allowing the loom to feed over the top corner.

Note: Allow any loom excess to coil itself neatly in front of the liner (between the front wall of liner and vehicle deck).



PREMIUM LOOM FITTING INSTRUCTIONS

Instruction # 10056026

READ INSTRUCTIONS CAREFULLY BEFORE COMMENCING THIS ACTIVITY.

For vehicles with a bed liner or SPORT-GUARD

- Skip to step 25

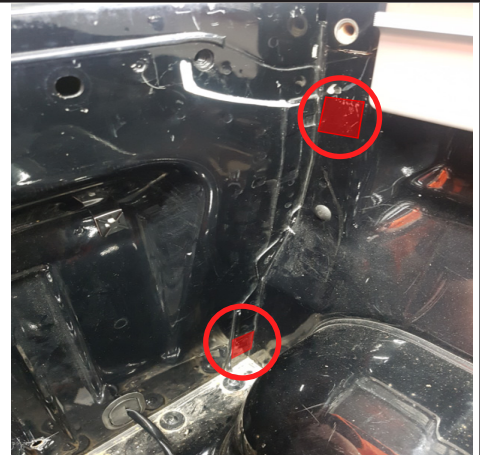
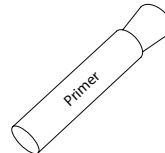
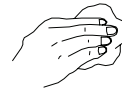
For vehicles without a bed liner or SPORTGUARD

-Comense step 21

Step 21

- Clean areas shown with alcohol wipe (item 9) and prime with primer stick (item 10).

Note: The top prime



Step 22

- Fasten cable tie (item 8) and adhesive cable tie mount (item 7) to the loom, 150mm from the end plug.



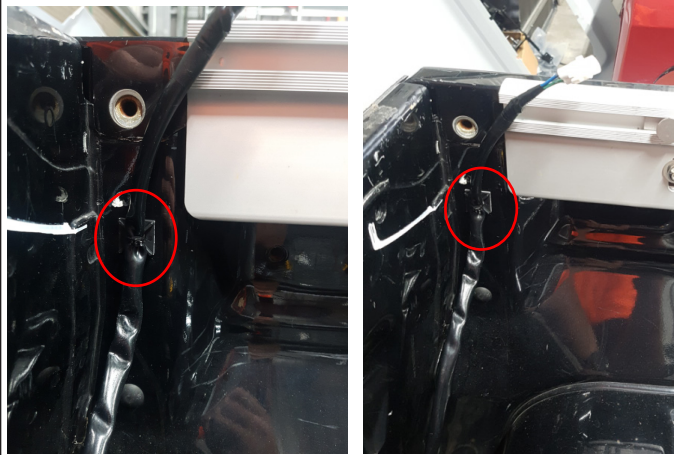
PREMIUM LOOM FITTING INSTRUCTIONS

Instruction # 10056026

READ INSTRUCTIONS CAREFULLY BEFORE COMMENCING THIS ACTIVITY.

Step 23

- Stick mount in the centre of the top primed position from step 21.



Step 24

- Coil any excess wiring loom and fasten to the lower primed position from step (21), using cable tie (item 8) and adhesive cable tie mount (item 7).



Step 25

- Under the scuff panels previously removed from both RH doors, ensure wiring loom is encased by the white loom protection box.



PREMIUM LOOM FITTING INSTRUCTIONS

Instruction # 10056026

READ INSTRUCTIONS CAREFULLY BEFORE COMMENCING THIS ACTIVITY.

Step 26

- Re-assemble cab interior plastic panels.



Step 27

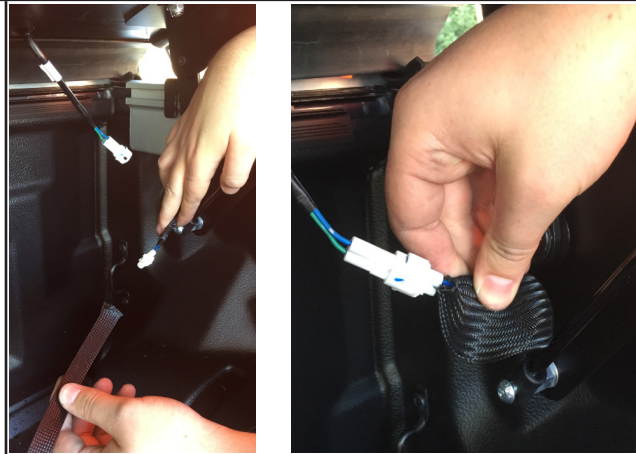
- Re-fit rear seat. Ensure seat mounting bolts and centre seatbelt mount are securely fastened.



Step 28

With SPORTLID V on vehicle.

- Slide braided sleeve (item 2) over the exposed vehicle central locking loom and plug into the SPORTLID V loom.



PREMIUM LOOM FITTING INSTRUCTIONS

Instruction # 10056026

READ INSTRUCTIONS CAREFULLY BEFORE COMMENCING THIS ACTIVITY.

Step 29

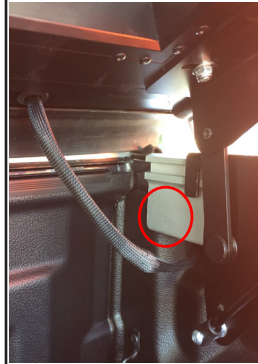
- Allow braided sleeve to cover entire length of exposed loom. Secure in place with electrical tape at highest point if desired.



Step 30

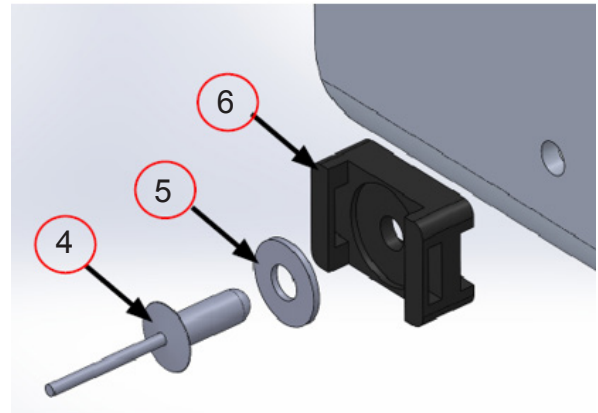
- Drill a 5mm hole in the RH Vehicle Connector Rail (VCR) at the location shown.

(15mm up from bottom edge, 20mm in from leading edge)



Step 31

- Rivet (item 4) the cable tie mount (item 6) and washer (item 5) to the drilled hole as shown.



PREMIUM LOOM FITTING INSTRUCTIONS

Instruction # 10056026

READ INSTRUCTIONS CAREFULLY BEFORE COMMENCING THIS ACTIVITY.

Step 32

- Using the reusable cable tie (item 3) **LOOSELY** fasten wiring loom to the mount.

Note: The loom must be able to slide through the cable tie as the SPORTLID V is opened and closed.

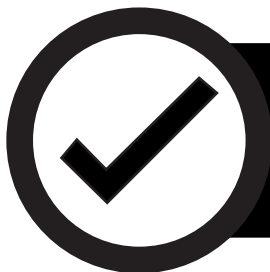


SPORTLID V Premium
fitment now complete.

PREMIUM LOOM FITTING INSTRUCTIONS

Instruction # 10056026

READ INSTRUCTIONS CAREFULLY BEFORE COMMENCING THIS ACTIVITY.



Installation complete. Please place these fitting instructions inside the owners manual wallet.

